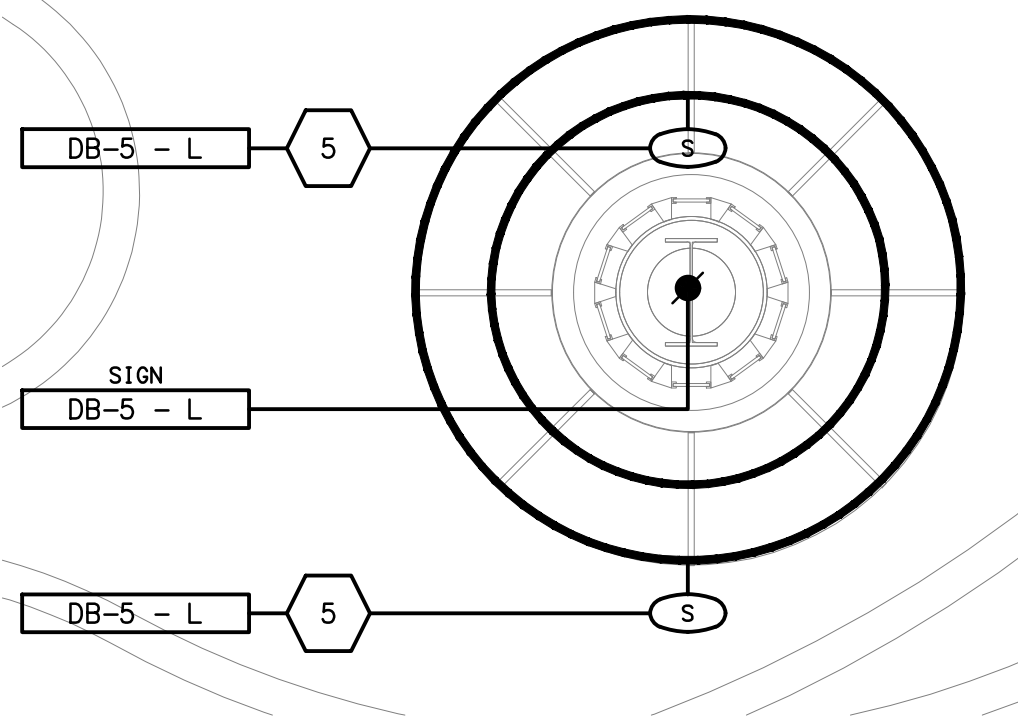
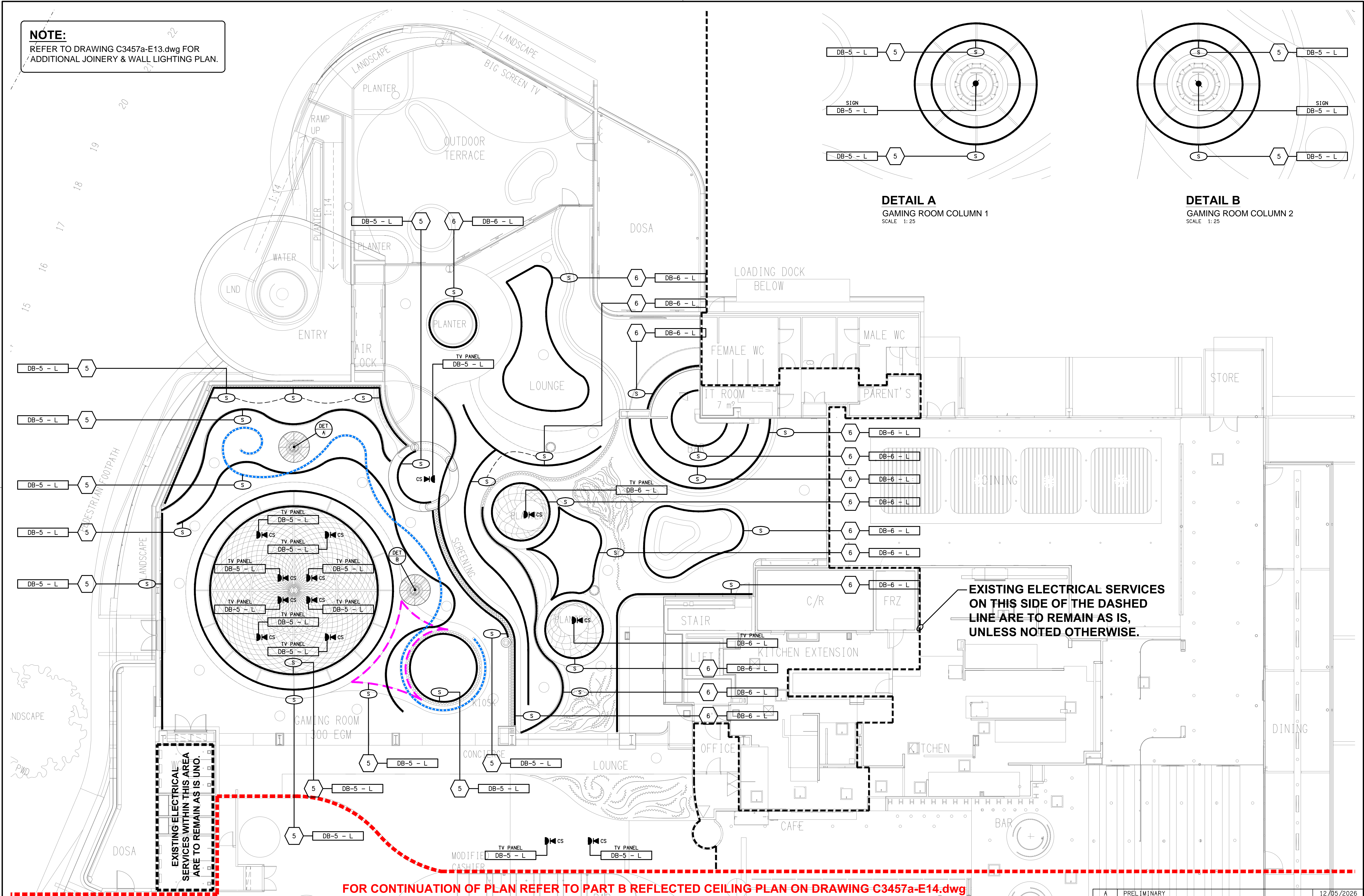
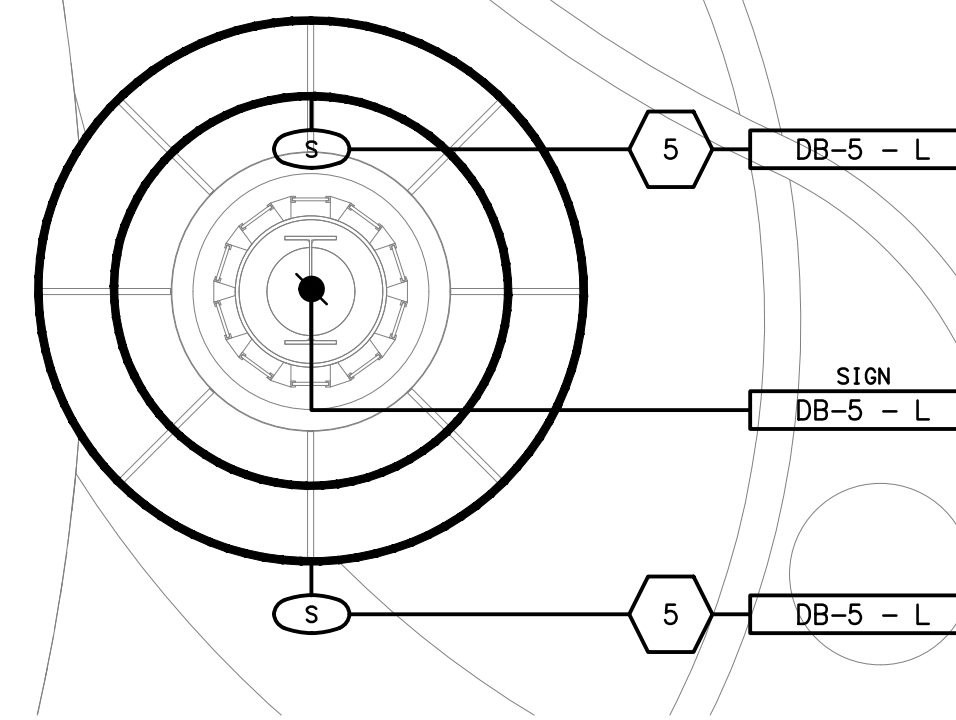


**NOTE:**  
REFER TO DRAWING C3457a-E13.dwg FOR  
ADDITIONAL JOINERY & WALL LIGHTING PLAN.



**DETAIL A**  
GAMING ROOM COLUMN 1  
SCALE 1: 25



**DETAIL B**  
GAMING ROOM COLUMN 2  
SCALE 1: 25

**EXISTING ELECTRICAL SERVICES  
ON THIS SIDE OF THE DASHED  
LINE ARE TO REMAIN AS IS,  
UNLESS NOTED OTHERWISE.**

**FOR CONTINUATION OF PLAN REFER TO PART B REFLECTED CEILING PLAN ON DRAWING C3457a-E14.dwg**

ELECTRICAL DESIGN GROUP BRISBANE  
PTY LTD  
ACN 092 710 793  
TRADING AS:  
ELECTRICAL DESIGN GROUP

THE COPYRIGHT OF THIS DRAWING  
REMAINS THE PROPERTY OF THE  
ELECTRICAL DESIGN GROUP.  
USE FIGURED DIMENSIONS  
IN PREFERENCE TO SCALE.  
ALL DIMENSIONS TO BE  
VERIFIED ONSITE.

**ELECTRICAL DESIGN GROUP**  
ELECTRICAL BUILDING SERVICES CONSULTANTS  
BRISBANE GOLD COAST

P.O. Box 15, Sherwood Q.4075  
Phone: (07) 3278 4375  
Email: brisbane@edg.net.au  
Web: www.edg.net.au

PROJECT:  
**THE LION RICHLANDS - STAGE 2**

133 PINE ROAD, RICHLANDS

A	PRELIMINARY	12/05/2026
REV:	DESCRIPTION:	DATE:

DRAWING:  
**ELECTRICAL SERVICES  
GROUND LEVEL PART A  
CEILING STRIP LIGHTING PLAN**

SCALE:  
1:100 UNO AT A1

PROJECT NO:  
**C3457a**

DRAWING NO:  
**E12**

REVISION:  
**A**